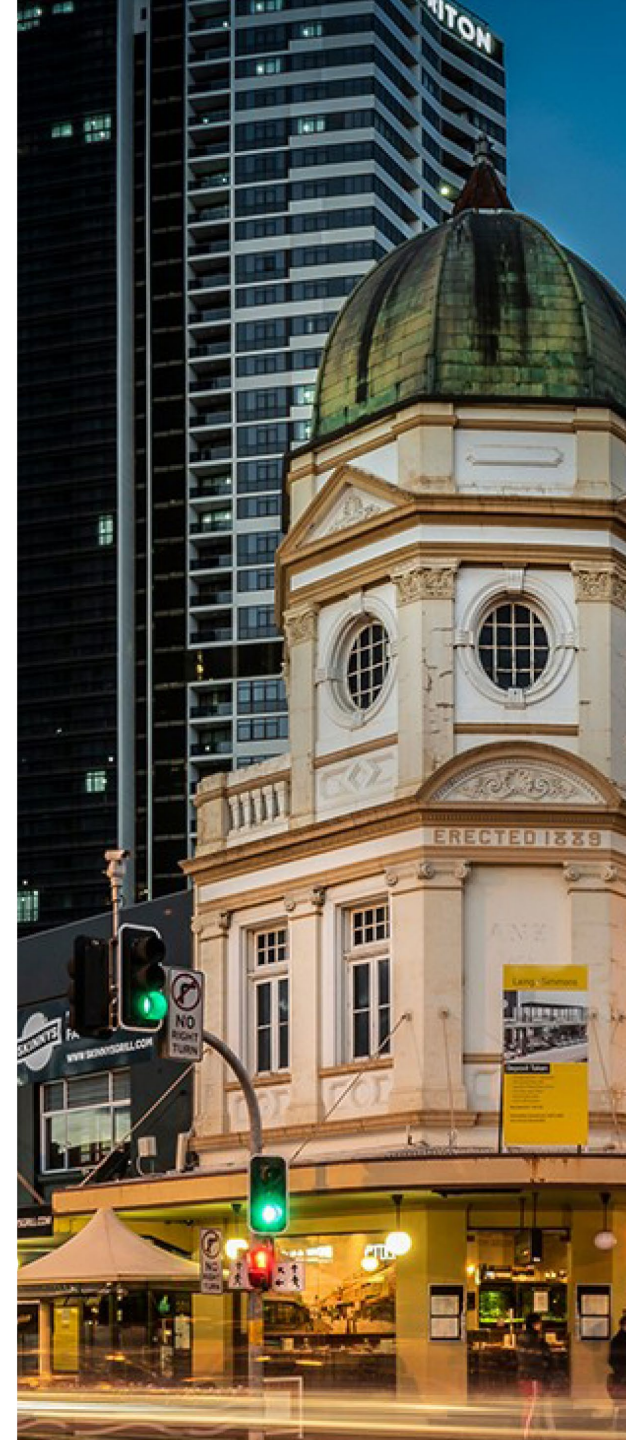




From vision to delivery: A Metropolis of three cities

Dr Sarah Hill

CEO • Western Parkland City Authority
Deputy Secretary • NSW Treasury



The journey so far

Planning reform

Vision

Strategic planning hierarchy

Delivery

Learning from the past to guide the future

Streamline planning processes and remove red tape

We need coordinated investment, planning and delivery

Create a new strategic planning authority – the Greater Sydney Commission

Greater Sydney Region Plan – the metropolis of three cities



Aligns land use, transport and infrastructure outcomes, for the first time in a generation

Sequenced and coordinated across Government

Greater Sydney Region Plan



District Plans / Place-based Infrastructure Compacts



Local Strategic Planning Statements

A focus on place

Western Sydney City Deal



Western Parkland City Authority



Western Parkland City Blueprint and Economic Development Strategy



Metropolis of Three Cities: a vision to 2056

Challenges and opportunities:

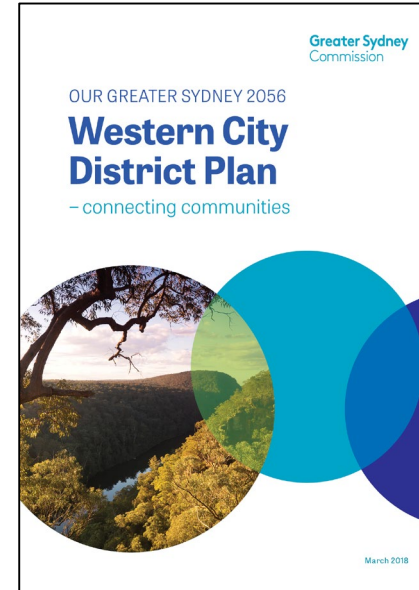
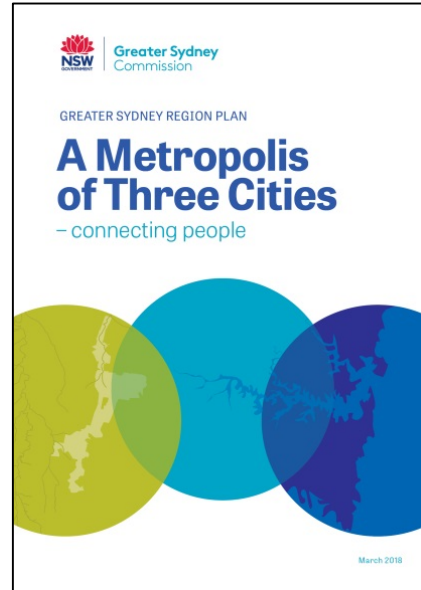
- 8M people by 2056
- 735k new dwellings by 2036
- 817k new jobs by 2036
- Urban heat and flooding
- Rebalancing Greater Sydney



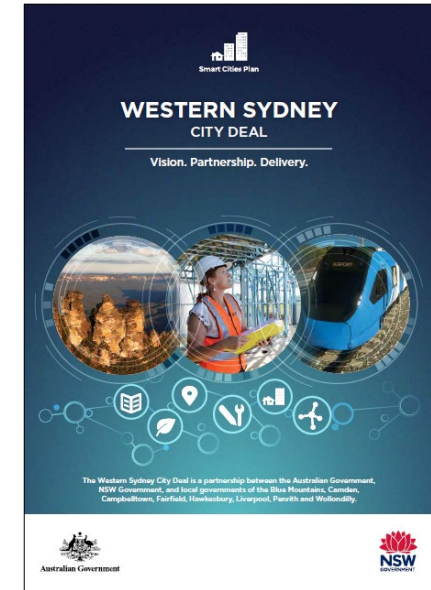
The Western Sydney City Deal

- \$20B investment
- Three levels of government
- 38 commitments
- 200k new jobs

Vision



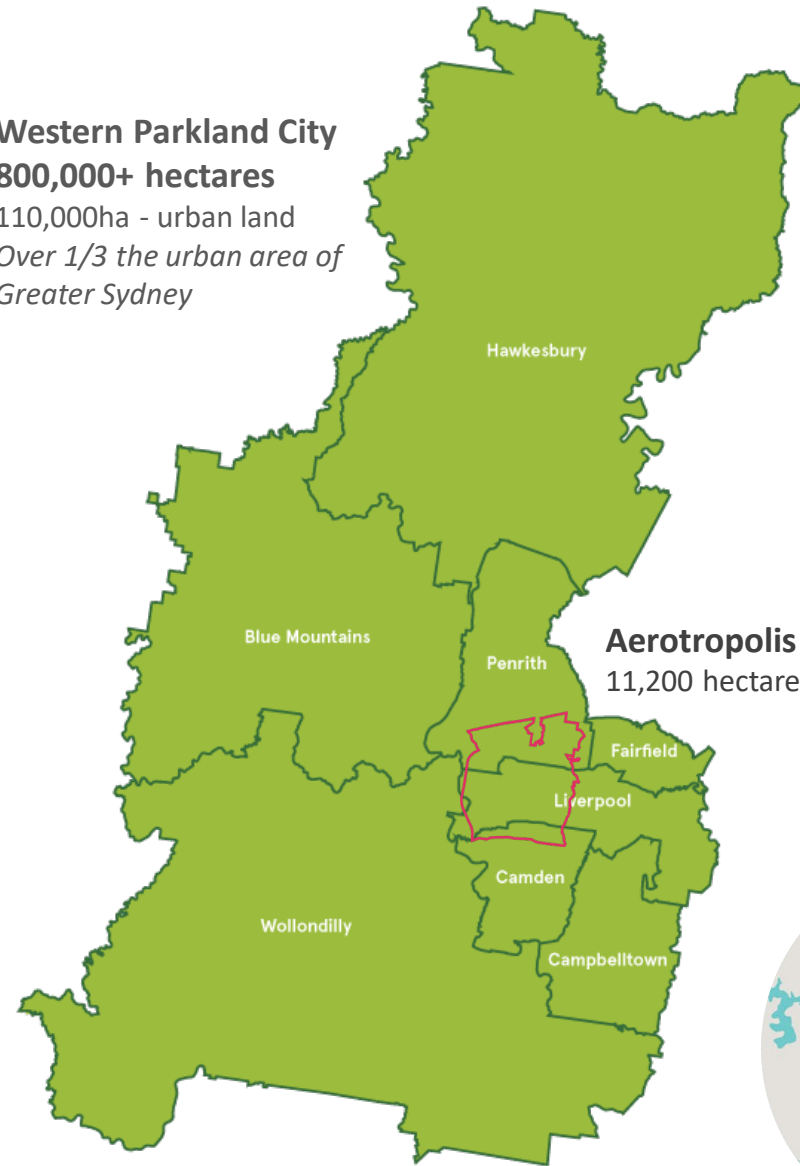
Delivery



- **\$5.6 billion Western Sydney International Airport** – construction underway
- **Western Sydney Aerotropolis** – master planning underway
- **\$3.5 billion Sydney Metro – Western Sydney Airport** – EIS on exhibition
- **\$190 million Western Parkland City Liveability Program** - underway
- **Digital Action Plan** – underway

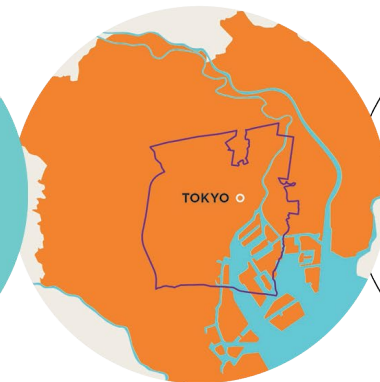
The Western Parkland City Authority

Western Parkland City
800,000+ hectares
110,000ha - urban land
*Over 1/3 the urban area of
Greater Sydney*



Aerotropolis
11,200 hectares

- Place-focused organisation
- Work alongside local, state and federal government agencies to jointly plan and deliver the Western Parkland City
- Oversight of the Western Sydney City Deal
- Strong focus on encouraging the economic growth and development of the Western Parkland City
- Rebalancing Greater Sydney



Our ambitions for the Western Parkland City

GREEN

CONNECTED

ADVANCED

Building a city in a parkland

South Creek – the spine
of the Parkland City

Liveability

Green and blue corridors

Sustainability and
resilience

Jobs and industry

Wellbeing

Creating the most connected city in the Southern Hemisphere

Connected to Country

Connected globally via
24/7 international airport

Connected across the city
and State by metro, rail
and freight

Walkable
Digitally connected

Utilities enabling
development

Economic ecosystems

Advanced industry, skills and research ecosystems

Advanced manufacturing

Cyber secure
Advanced skills,
education and training

Advanced city technology

Value added production

Global scale

Commercialising
innovations



Achieving our ambitions

We are a place-focused organisation, providing a holistic approach to investment, coordination and delivery across the Western Parkland City.

CO-ORDINATION

- Chief City Co-ordinator
- Western City Blueprint
 - Master Planning
 - Aligning Planning Outcomes

INVESTMENT

- Western Sydney Investment Attraction
- Western City Economic Development Strategy
- Skills and Education

DELIVERY

- City Deal
- Multi Utilities
- Aero Core Development
- Agribusiness Precinct

**GREEN
CONNECTED
ADVANCED**



Partners in the Parkland City



GOVERNMENT



INDUSTRY



+ 18 Space SMEs



Our initial priorities



Across the Western Parkland City

A **Blueprint for the Western Parkland City**

An **economic development strategy for the Western Parkland City**

A new model for **skills, education and training**



Naming the **Aerotropolis Core**

Developing the Aerotropolis Core with our partners

Within the Aerotropolis

The Aerotropolis Core and Advanced Manufacturing Research Facility



CSIRO:
Australia's
National Science
Agency in the
Aerotropolis Core



The Agribusiness Precinct



Multi-utilities



From vision to delivery: My three key takeaways

1. The importance of a vision, alignment and collaboration
2. The need for government to be proactive and pragmatic
3. Adapt to the times – you can't just set and forget!



Connect with the Authority



@westsydcity



Western Parkland City Authority



Western Parkland City Authority



@western.parkland.city

wpca.sydney

contact@wpca.sydney

