



# Infrastructure New Zealand Building Nations Symposium



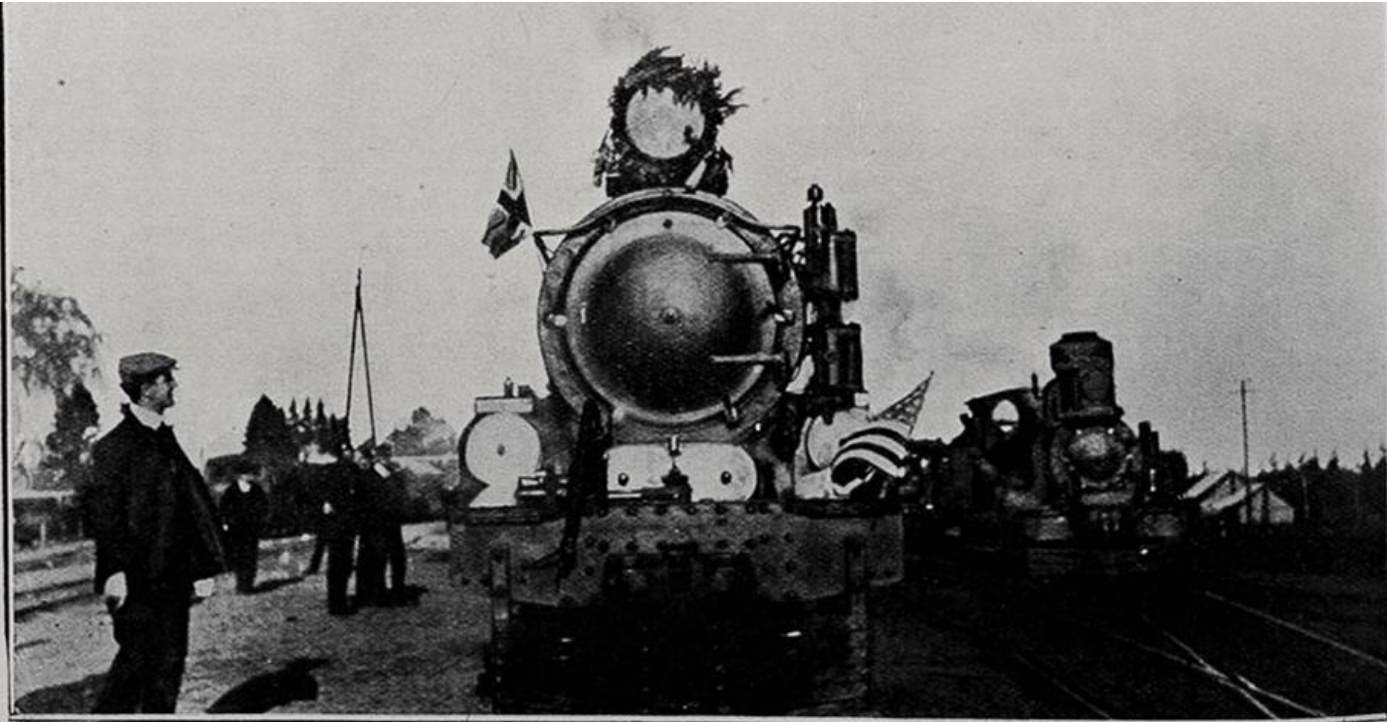
22 August 2019



# Ka mua, ka muri – we walk backwards into the future



# Ka mua, ka muri – we walk backwards into the future



THE DECORATED ENGINE OF THE PARLIAMENTARY SPECIAL: THE FIRST THROUGH TRAIN BETWEEN WELLINGTON AND AUCKLAND. G. Cartwright, Photo.

# A modern railway



# Highs and lows of the 21<sup>st</sup> century

---





#### EXPORT CONTAINERS TO/FROM 9 PORTS

- 6 million tonnes per annum
- Exports include dairy, meat & finished products

#### COMMUTER RAIL

- Enables 21 million passenger trips in Auckland and 13 million in Wellington per annum
- Inter-regional:
  - Capital Connection – 135,000 passengers per annum

#### TOURISM

- 245,000 rail tourists per annum
- 800,000 ferry travellers per annum

## KiwiRail INTERMODAL

#### DOMESTIC FREIGHT AROUND NEW ZEALAND

- 2.8 million tonnes per annum
- Includes movement of dairy, finished products, grocery products & wine

#### BULK FREIGHT

- 2.5 million tonnes to port or factories per annum
- Includes coal, steel & milk

#### FORESTRY FREIGHT

- 4.9 million tonnes predominantly to port
- Includes logs, pulp & paper

#### ROAD/RAIL USERS

- 20 Container Terminals nationally
- Approx. 700,000 containers throughput per annum



# What are we doing with the Government's \$1b investment?

---



# \$35m

- Design and advance procurement of two new rail-enabled ferries
- In service by 2023/24



# \$375m over two years

- Replacing rolling stock
- Upgrading maintenance facilities
- 100 locomotives
- Repurposing old wagons for forestry transport



# \$331m over two years

- Tracks, bridges, tunnels, signals
- Handling equipment
- New freight reservation, booking and tracking system for customers



# \$300m PGF – supporting the regions

---

- Range of rail projects
- Working with Government to determine priorities
- NAL?



# Previous PGF funding: Coastal Pacific service upgrade

- \$40m
- Year round, more capacity, new premium carriage, platform upgrades, new reservation system
- Service expected to be operational in 2022



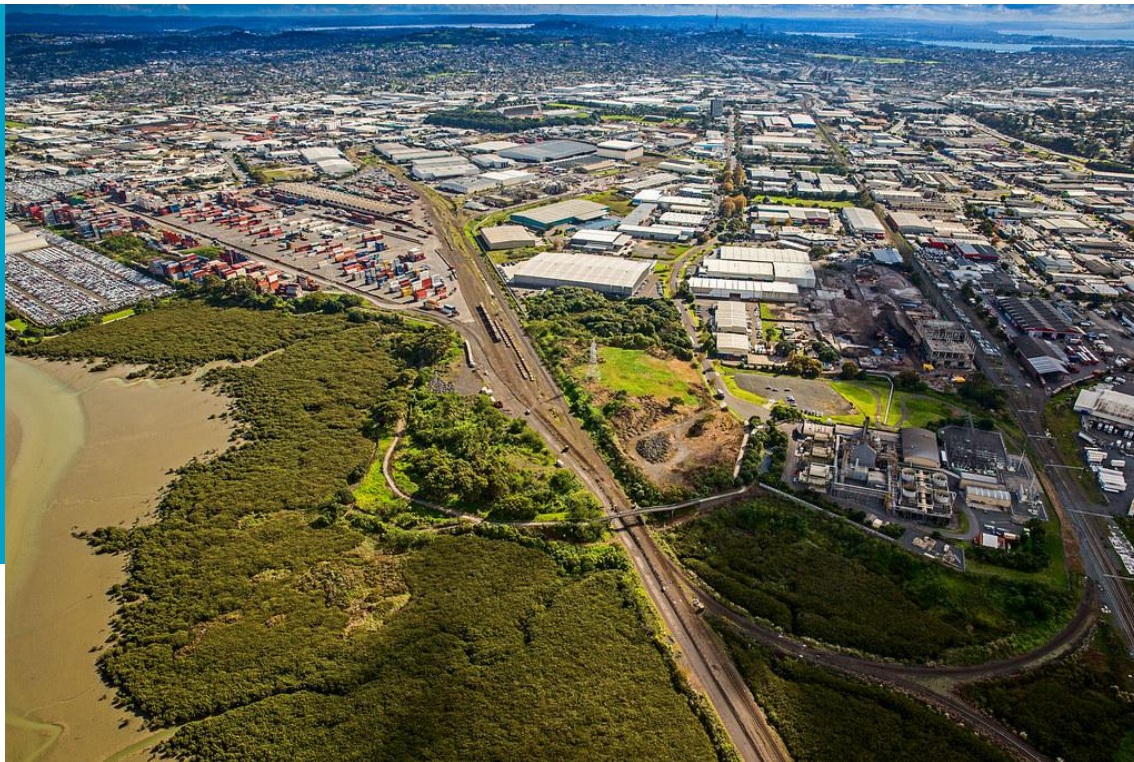
# Previous PGF funding: TranzAlpine service upgrade

- \$40m
- More capacity, new premium carriage, platform upgrades, new reservation system
- Service expected to be operational in 2022



# Previous PGF funding: Palmerston North freight hub

- \$40m
- New inter-modal freight hub
- Encouraging freight businesses into the area
- Existing site freed up to unlock growth
- Expected to take up to three years



## Previous PGF funding: Napier to Wairoa

\$6m  
Reopen mothballed  
Napier to Wairoa line



# Previous PGF funding: Whanganui rail upgrade

- \$3m
- Improve rail infrastructure to support freight growth
- Expected completion July 2020



# Other funding: Wellington Metro

- \$300m
- Completed 2023
- Overhead traction upgrade, double tracking Trentham to Upper Hutt, rehabilitation of the Wairarapa line



# Other funding: Hamilton-Auckland commuter service

\$40m

Five year trial

- Services to begin in March 2020



# Other funding: Auckland Metro

---

- CRL
- Business cases being developed for Third Main, Papakura to Pukekohe electrification, infrastructure upgrades



# Future of rail

- Government's 10-year plan for rail
- September/October 2019



# Upper North Island supply chain study

Report due September 2019



Photo: David Wagstaff





# | Questions

