

An aerial photograph of Greater Manchester at dusk. The city is densely packed with buildings, many of which are illuminated from within, casting a warm glow. In the foreground, several large, ornate domes are visible. To the left, a prominent clock tower with a pointed roof stands out. In the background, a tall, modern skyscraper rises above the rest of the city. The sky is a mix of orange, pink, and blue, indicating the time is either sunset or sunrise. The overall scene is a vibrant and detailed representation of the city's architecture and urban landscape.

# OUR HOME: GREATER MANCHESTER





# THE GREATER MANCHESTER ECONOMY



2.8m people  
+240,000 since 2000



1.3m working in GM  
+100,000 over next 10 years



110,000 businesses



Over 100,000 Higher Education Students  
at 5 HE Institutions

## Gross Value Added



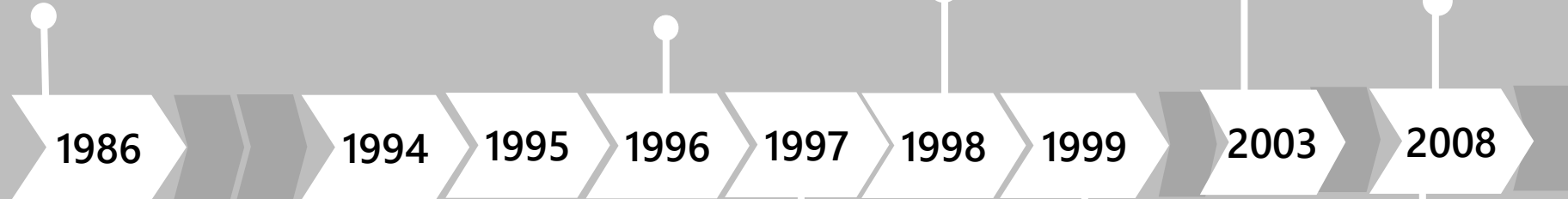
BIGGER THAN



# Timeline



Greater Manchester Council abolished



Association of Greater Manchester Authorities and GMPTA/E established

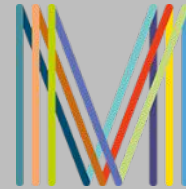


Greater Manchester Passenger Transport Authority



AGMA  
ASSOCIATION OF  
GREATER MANCHESTER  
AUTHORITIES

City Pride Partnership created



Marketing Manchester established



Northwest  
REGIONAL DEVELOPMENT AGENCY

RDAs established

MIDAS established



MIDAS<sup>®</sup>  
MANCHESTER INVESTMENT  
DEVELOPMENT AGENCY SERVICE  
[www.investinmanchester.com](http://www.investinmanchester.com)

Manchester Enterprises established



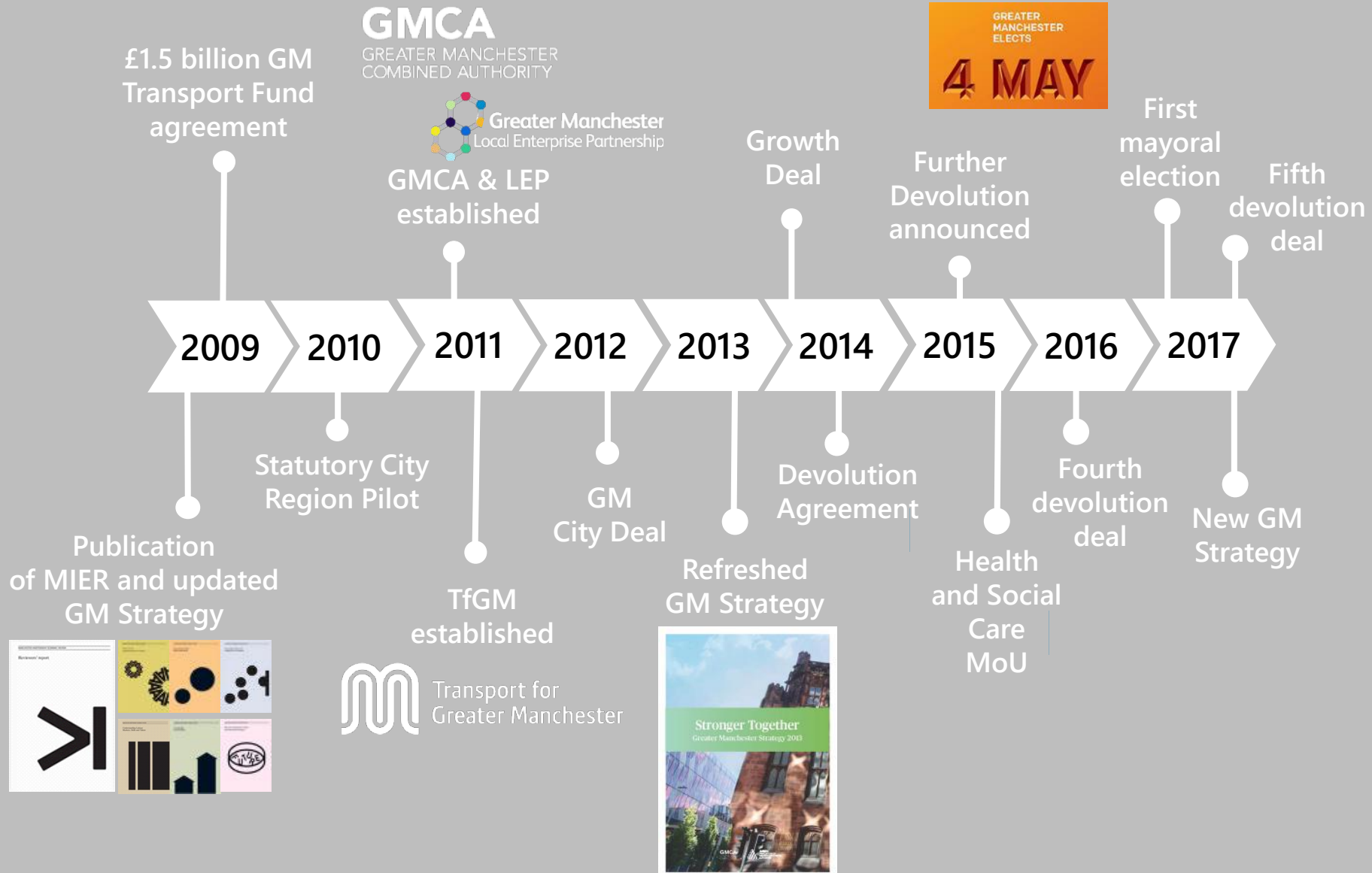
'Greater Manchester Strategy – Sharing the Vision' published

Transport referendum held (congestion charging)

New Economy established

new  
economy

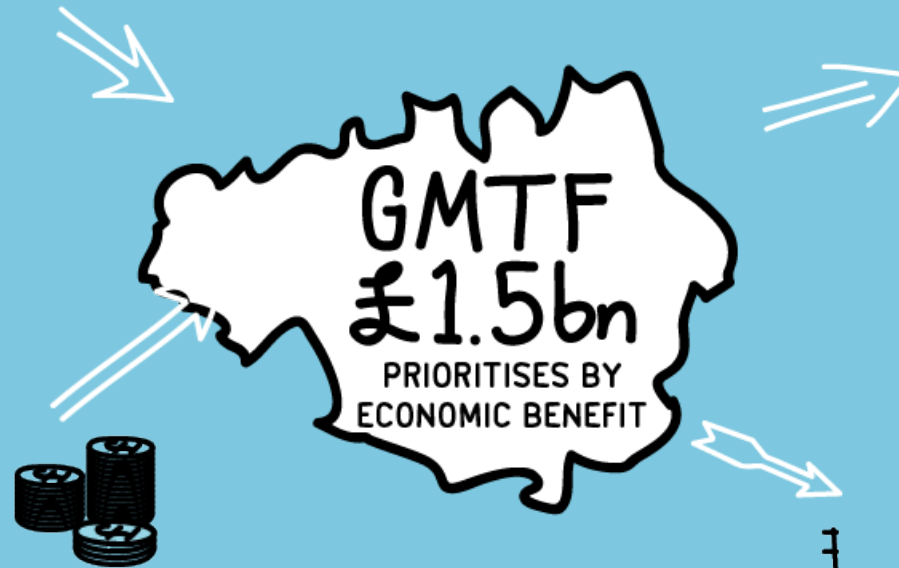
# Timeline



## COLLABORATION



## FUNDING

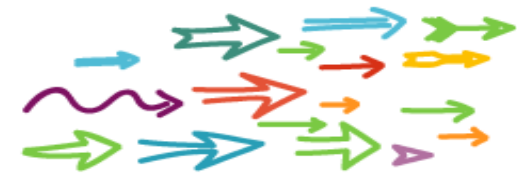


## OUTCOME

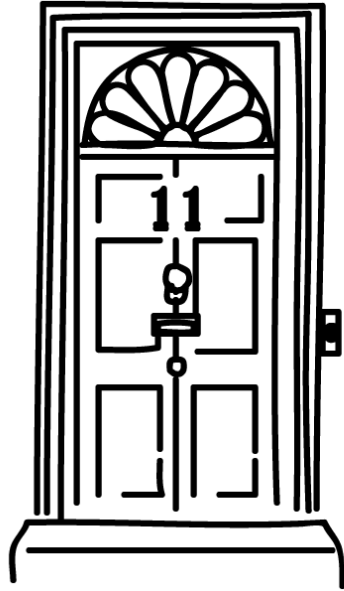


## BENEFIT





# Greater Manchester Devolution Agreement



- Signed November 2014
- Government (Treasury) and Greater Manchester leaders
- Game-changing devolution package





**TRANSPORT**



**HOUSING**



**SKILLS & BUSINESS SUPPORT**



**HEALTH & SOCIAL CARE**

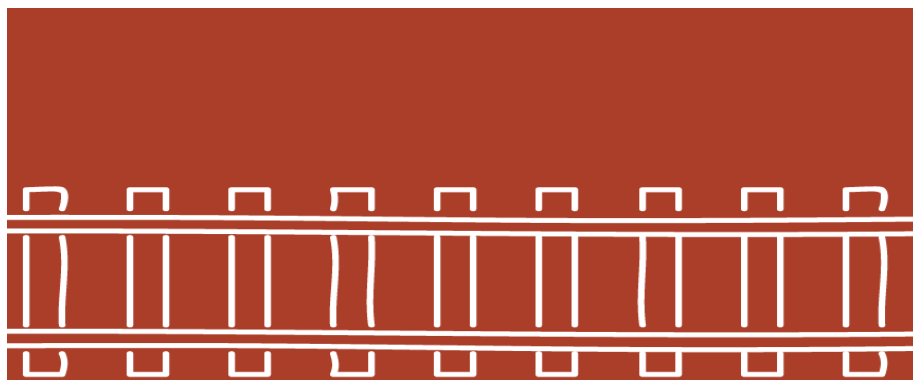




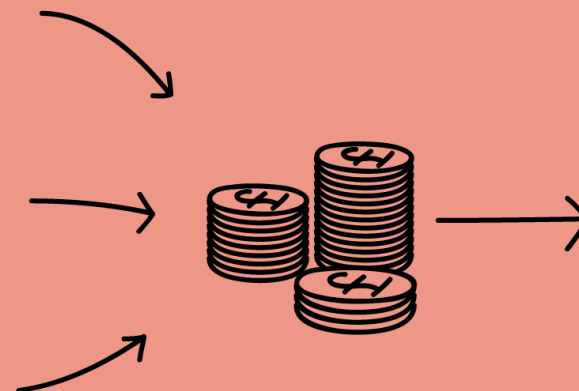
**BUS FRANCHISING POWERS**



**HIGHWAYS**



**RAIL STATIONS**



**MULTI-YEAR TRANSPORT FUNDING**

# Northern Powerhouse – opportunity



16m  
PEOPLE



7.2 MILLION  
JOBS

£290bn

GVA TOWARDS UK ECONOMY

£37bn  
GVA  
GAP

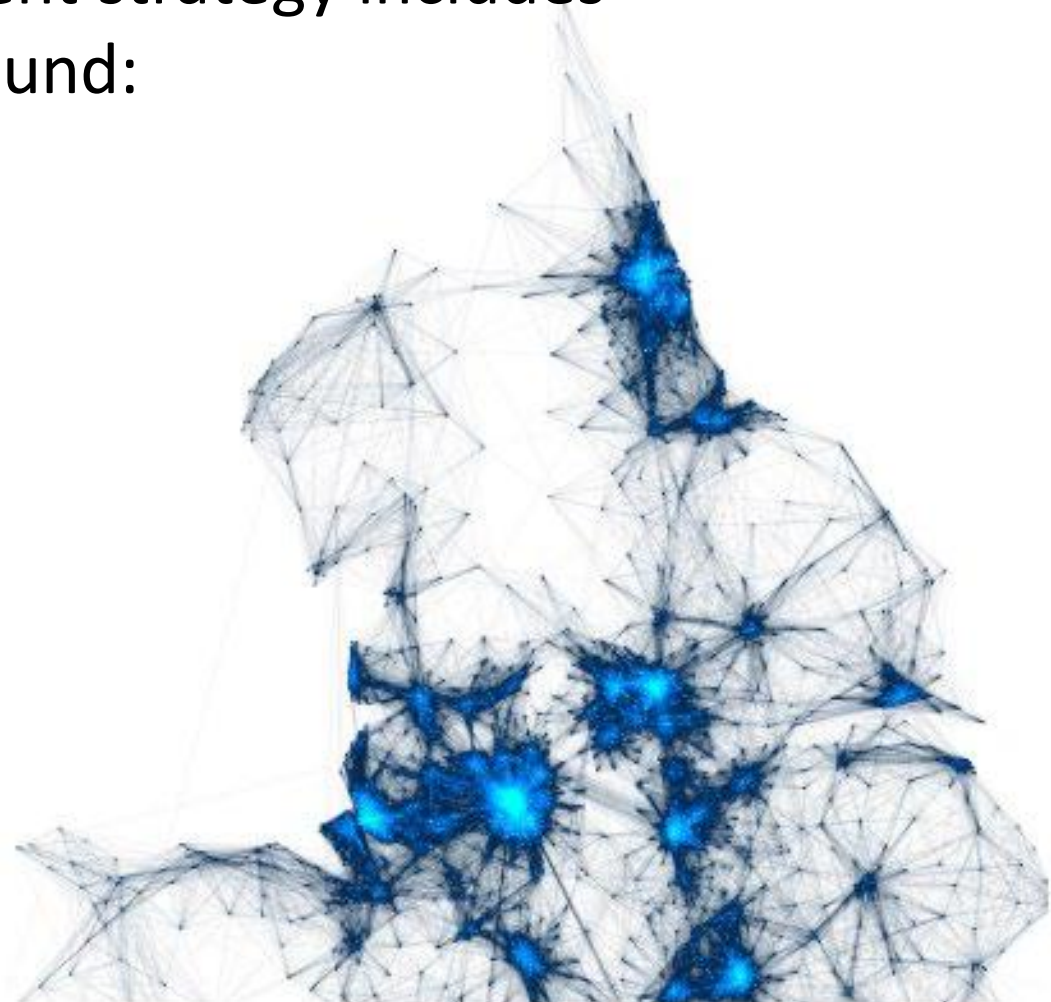


WORLD-RENOWNED UNIVERSITIES

# Transport for the North

20 year multi-billion investment strategy includes transformational projects around:

- **Rail**
- **Airports**
- **Highways**
- **Smart Ticketing**
- **Freight and Logistics**



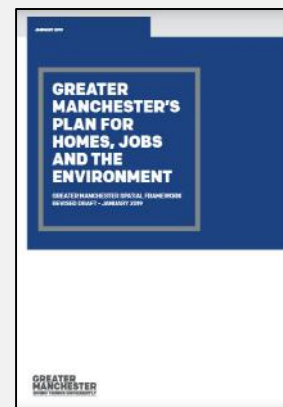




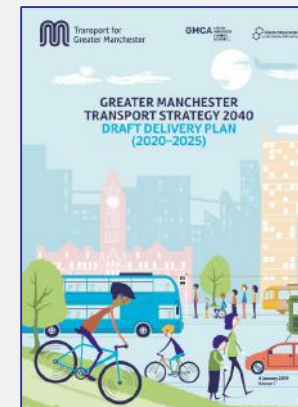
First Mayoral election



First Green Summit and GM-wide Clean Air commitments



Revised draft of GMSF and 2040 5-Year Delivery Plan out for consultation

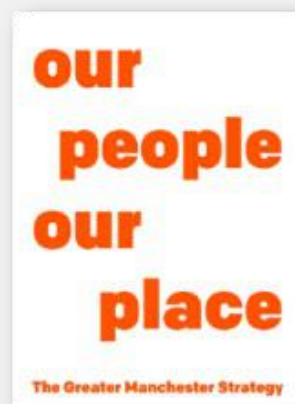
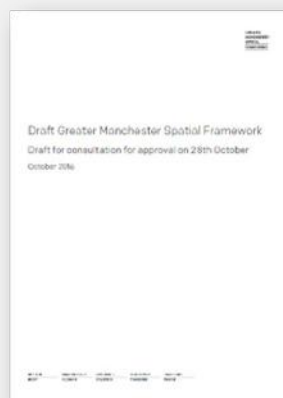


First draft of GMSF out for consultation

Publication of revised GMS

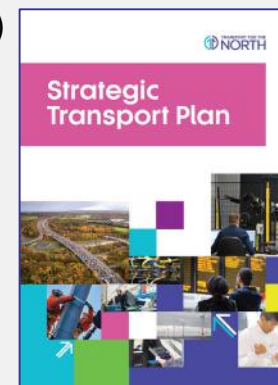
OBC GM Clean Air Plan

Publication of GM Local Industrial Strategy



2040 Progress Report (February 2017 - October 2018)

Second Green Summit and 5 Year Environment Plan

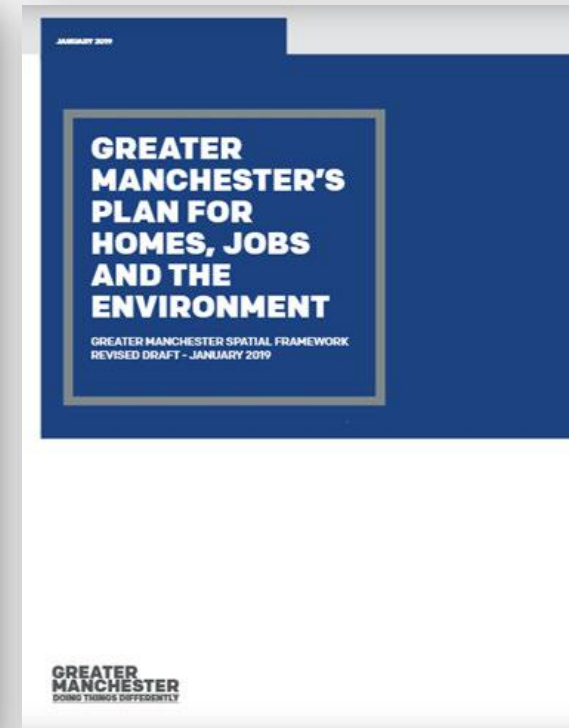
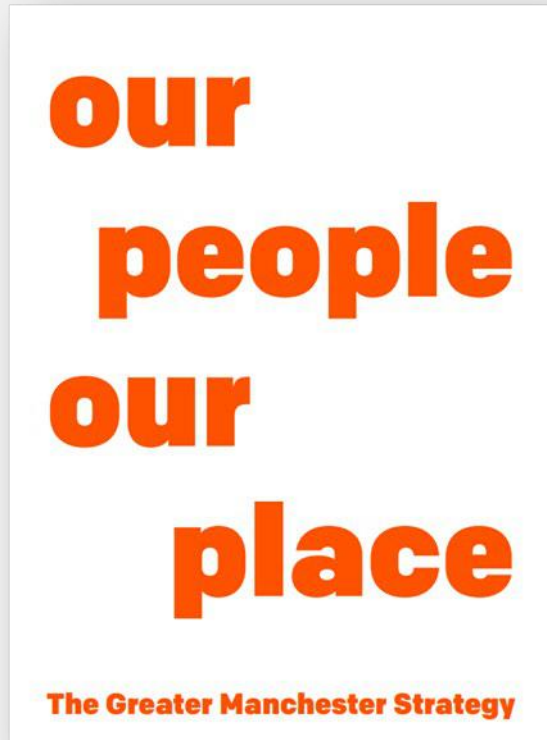


Final Transport for the North STP

# FUTURE OF GREATER MANCHESTER



# A new long-term strategic context for GM



Places

People

Assets



# GREATER MANCHESTER TRANSPORT STRATEGY 2040

## Draft Delivery Plan 2020-2025



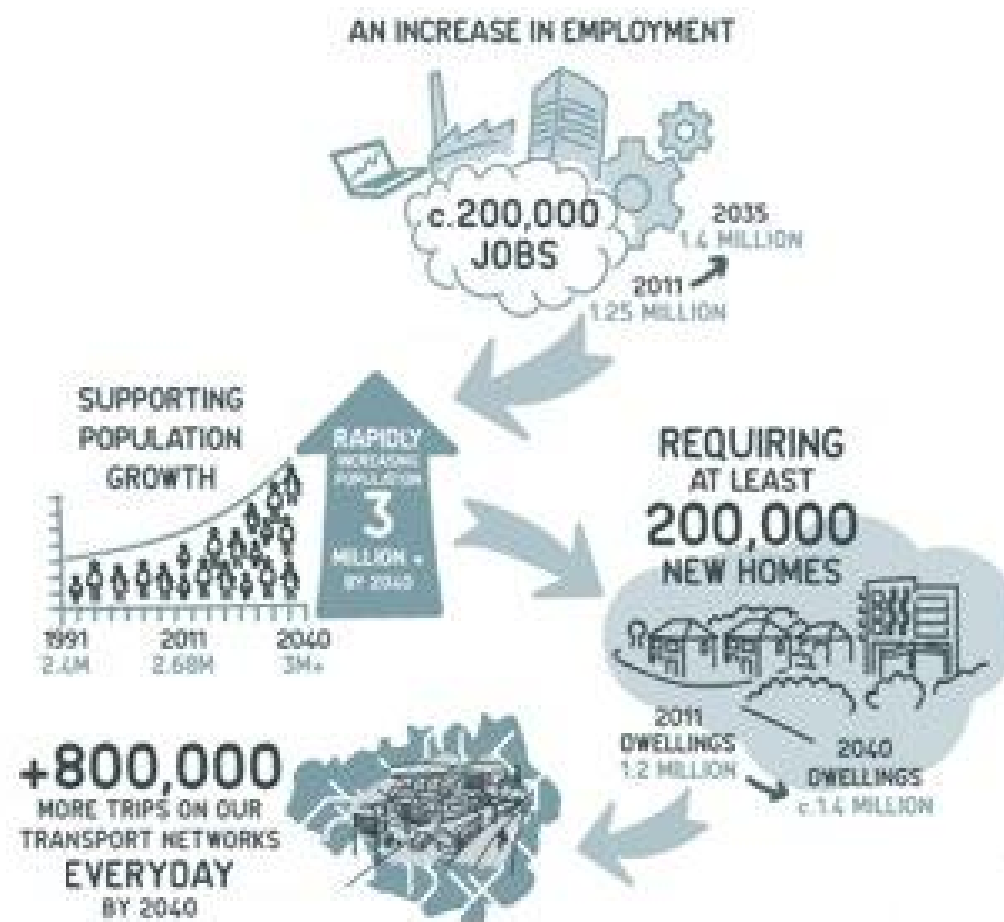
# Our vision for 2040

*“World class connections that support long-term, sustainable economic growth and access to opportunity for all.”*

- To achieve this we want 50% of all journeys in Greater Manchester to be made by walking, cycling and public transport by 2040.



## SUPPORTING SUSTAINABLE ECONOMIC GROWTH

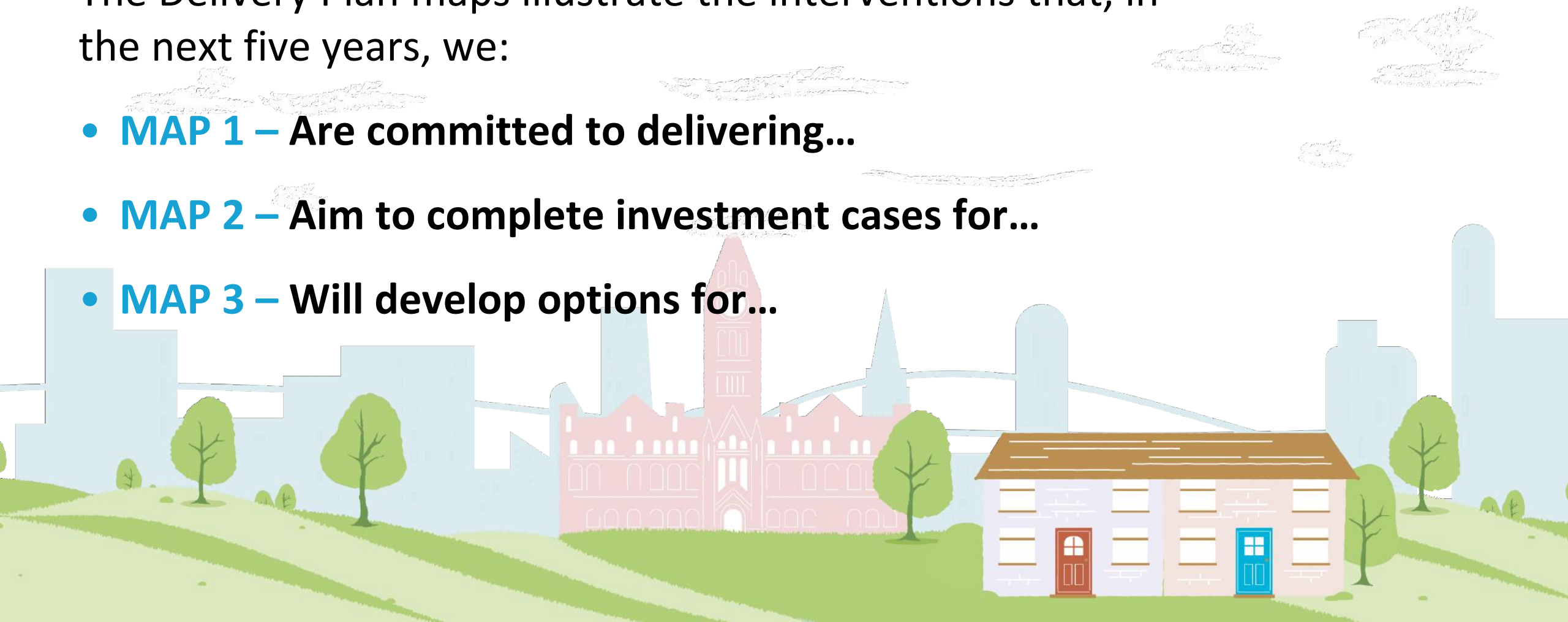




# The Delivery Plan

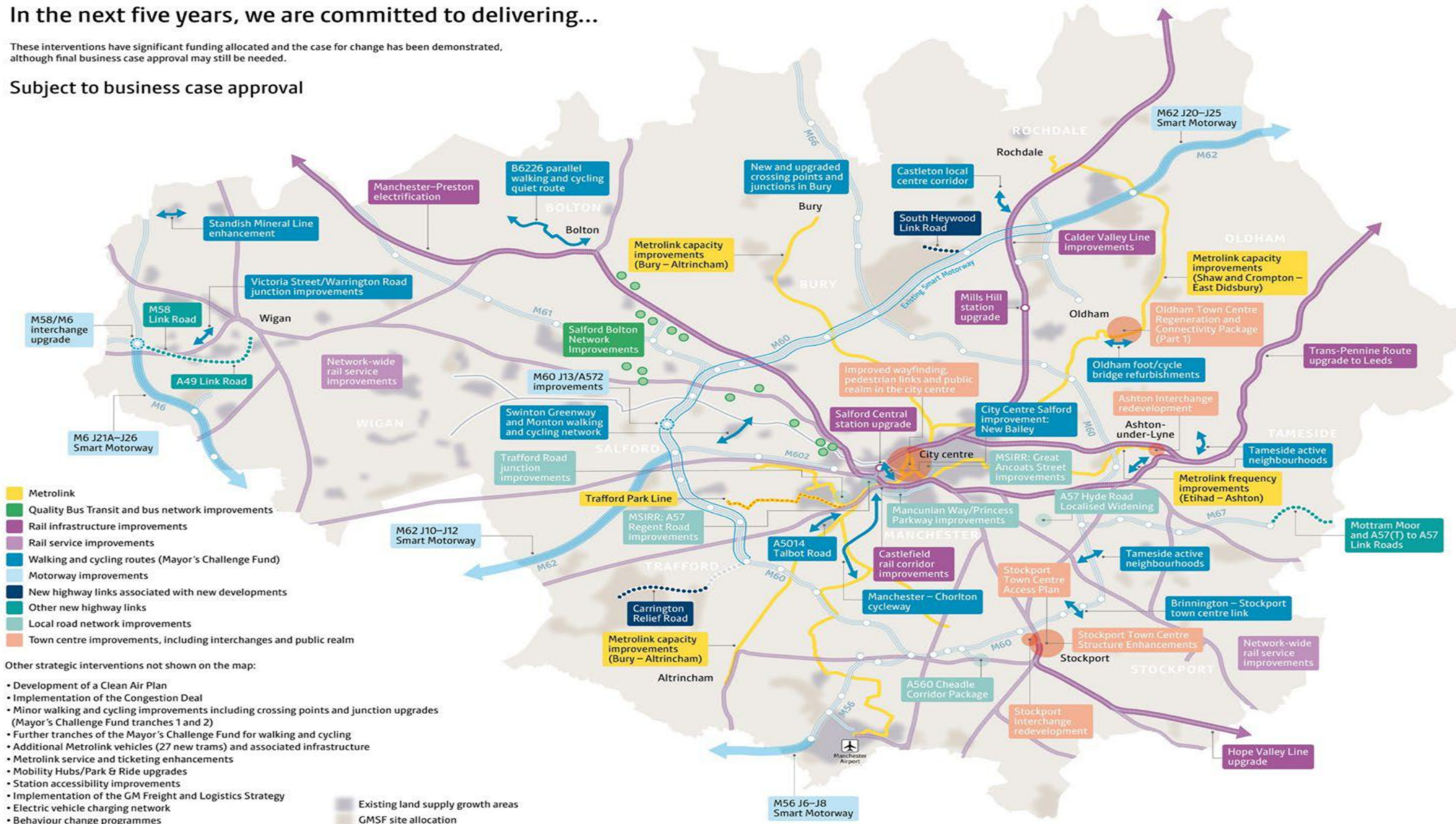
The Delivery Plan maps illustrate the interventions that, in the next five years, we:

- **MAP 1** – Are committed to delivering...
- **MAP 2** – Aim to complete investment cases for...
- **MAP 3** – Will develop options for...



In the next five years, we are committed to delivering...

Subject to business case approval



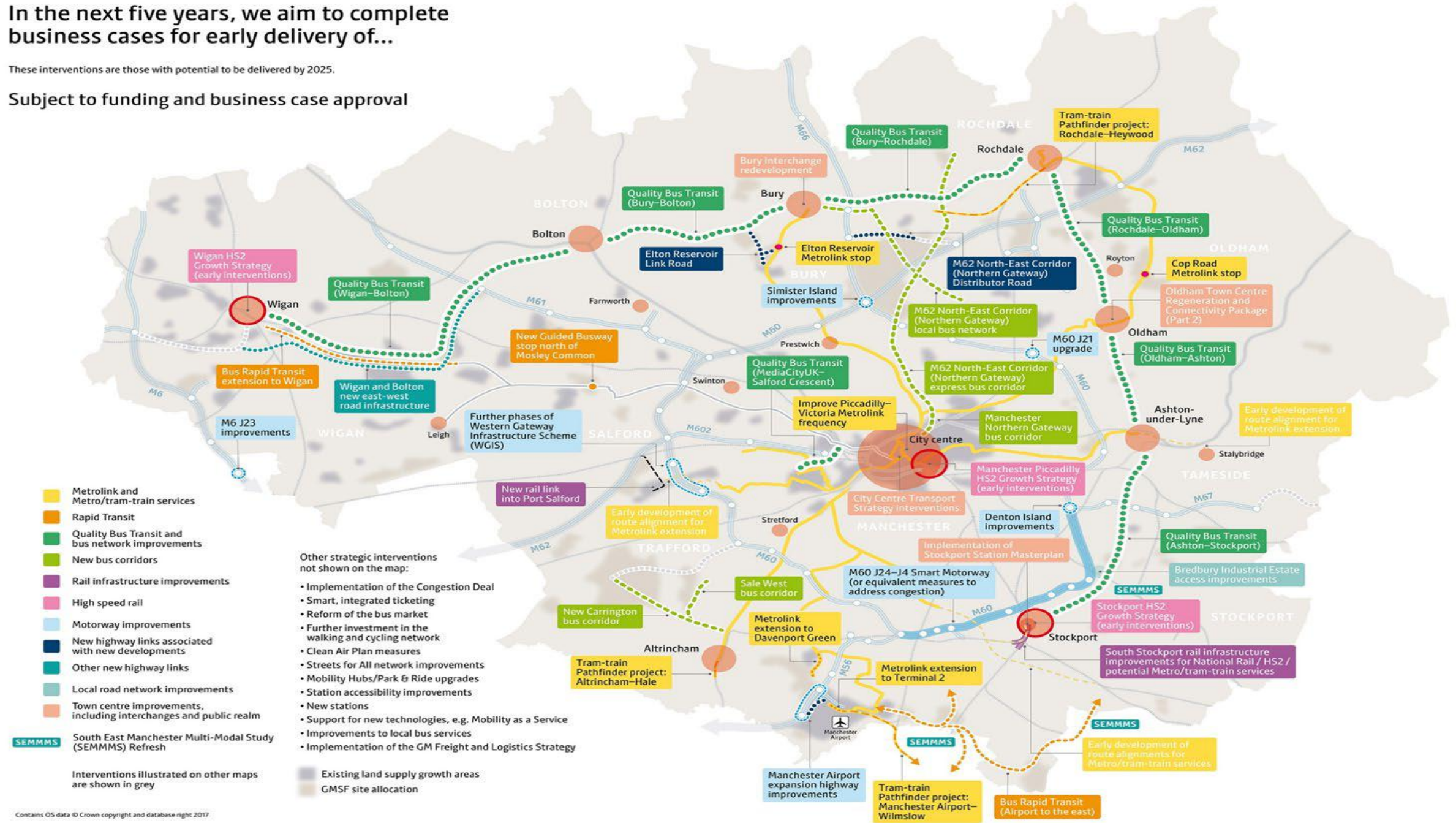


## MAP 2

In the next five years, we aim to complete business cases for early delivery of...

These interventions are those with potential to be delivered by 2025.

Subject to funding and business case approval



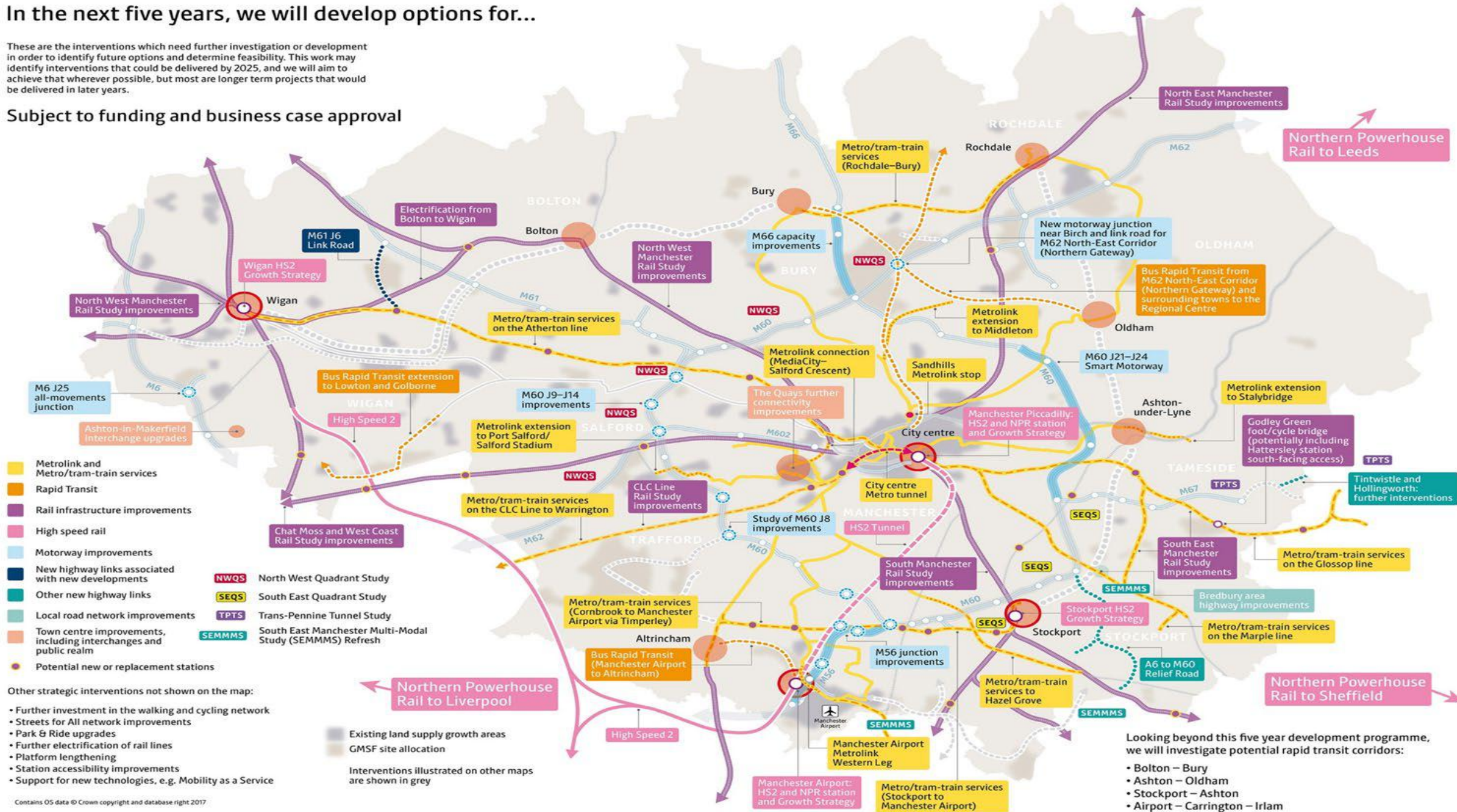


## MAP 3

### In the next five years, we will develop options for...

These are the interventions which need further investigation or development in order to identify future options and determine feasibility. This work may identify interventions that could be delivered by 2025, and we will aim to achieve that wherever possible, but most are longer term projects that would be delivered in later years.

### Subject to funding and business case approval





Ensure new developments support sustainable transport, and our town centres are pleasant, thriving and well connected.



Make walking and cycling the natural choice for short journeys.



Radically transform public transport capacity of the regional centre to benefit the whole of Greater Manchester.

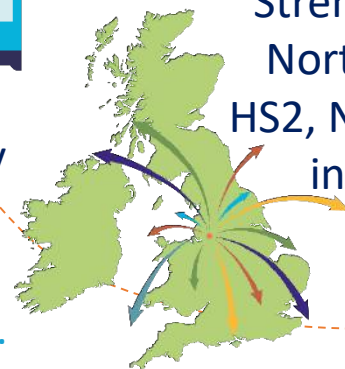
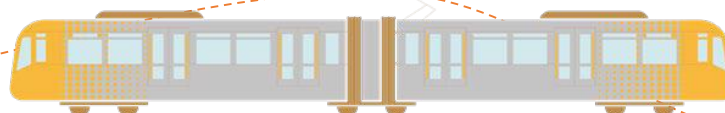


Maximise efficiency and reliability of our existing transport networks.



## 2040 Delivery Plan

Offer genuine alternatives to the car for travel across the wider city-region, with good orbital connections between town centres.



Strengthen our position at the heart of the Northern Powerhouse by fully integrating HS2, Northern Powerhouse Rail, and national infrastructure with regional and local networks.



Ensure Manchester Airport and the Airport Enterprise Zone sustainably meets its potential as an international gateway and a GM employment centre.



Move and manage freight in the most sustainable and efficient ways.

Research and harness future technology, innovations and digital connectivity.

